

# My Space for Your Safety



**Maryland Department of Transportation**



**Maryland  
Highway Safety Office**

# Traffic Safety is an Information based Community of Interest

Net-centric: (adj.): Participating as a part of a continuously-evolving, complex community of people, devices, information and services interconnected by a communications network to achieve optimal benefit of resources and better synchronization of events and their consequences.

~ Wikipedia



# STKO

“As we work to improve homeland security and public safety in every region of our state it is critical that our emergency managers and first responders are working together and sharing information.”

~ Martin O'Malley  
Governor of Maryland



# TRCC Objectives

- Automate
- Educate
- Communicate
- Awareness
- Security
- Quality



# Automated Field Reporting



- E-Crash
- E-Citations
- E-Run Reports
- E-Incident Location Tool

# Educate Users and Providers

- Best Practices
- National Standards
- Situation Awareness
- Uniform Training Resources



A photograph of a man in profile, looking at a laptop screen. The image is semi-transparent and serves as a background for the text. The man has dark hair and a beard, and the laptop is open in front of him.

# Interoperability of Safety Data

- Data Dictionary
- Infrastructure Systems
- Information Processing Policies
- Uniform communication policies

# Data Access Levels

- Certification Process
- Certification Life Cycle
- Uniform Protocols
- Uniform Access Levels



# Alerting and Forecasting Systems

- Post Before Process Crash and DUI Incidents
- Critical Analysis Reporting Environ
- Other automated reporting tools

future?

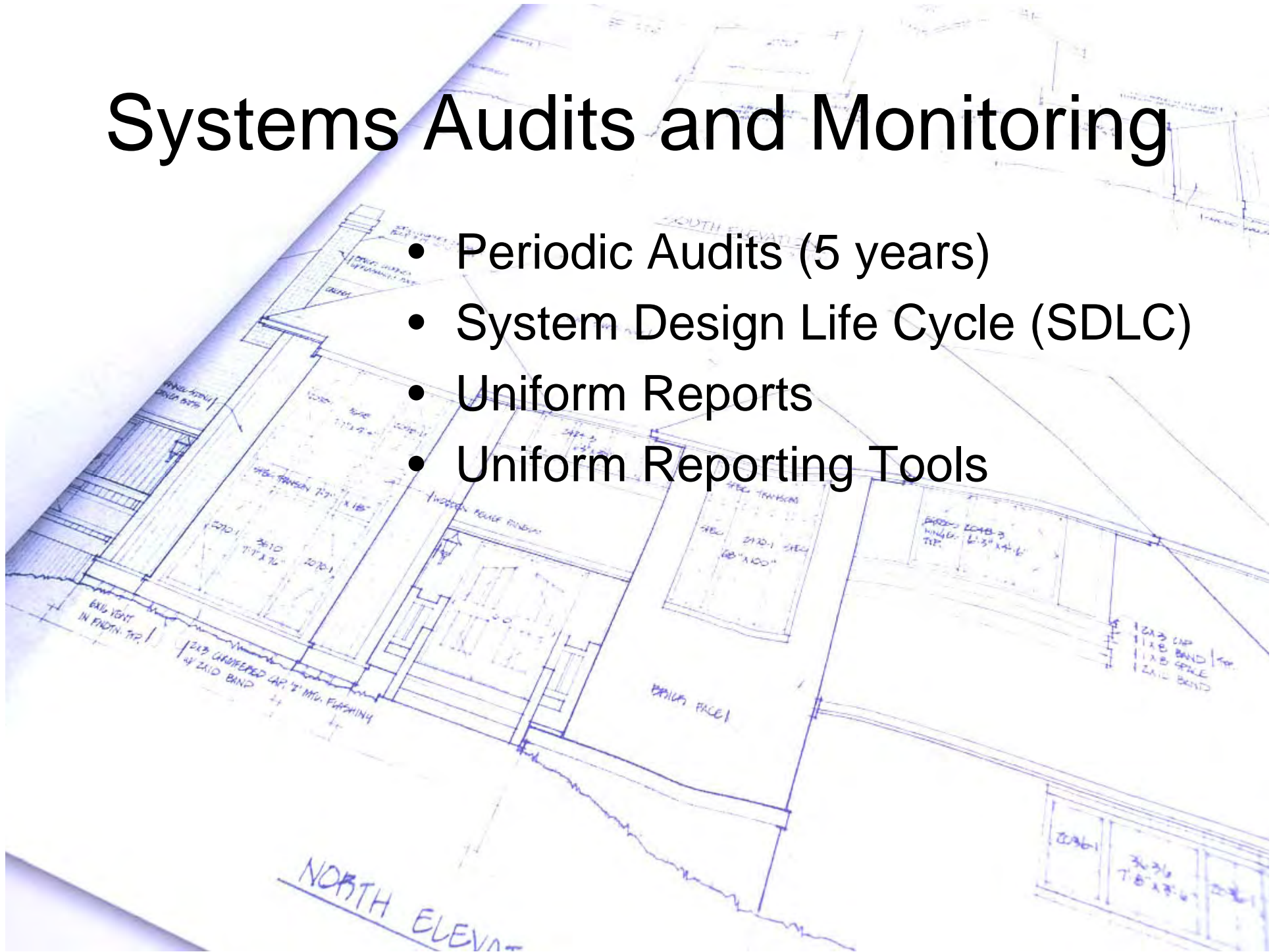
# Virtual GIS Database

- Locations
- Events
- Citizens



# Systems Audits and Monitoring

- Periodic Audits (5 years)
- System Design Life Cycle (SDLC)
- Uniform Reports
- Uniform Reporting Tools





**Questions?**

# Gregg Presbury

Traffic Records Coordinator

Maryland State Highway Administration

Maryland Highway Safety Office

A: 7491 Connelley Drive, Hanover MD 21076

E: [gpresbury@sha.state.md.us](mailto:gpresbury@sha.state.md.us)

P: 410.787.4068

F: 410.787.4020