

Blending Engineering and Behavior Workshop National Perspective

GHSA Annual Meeting – 2009
Wednesday, September 2, 2009

Tamiko Burnell
FHWA, Office of Safety

Collaborative Plans & Programs

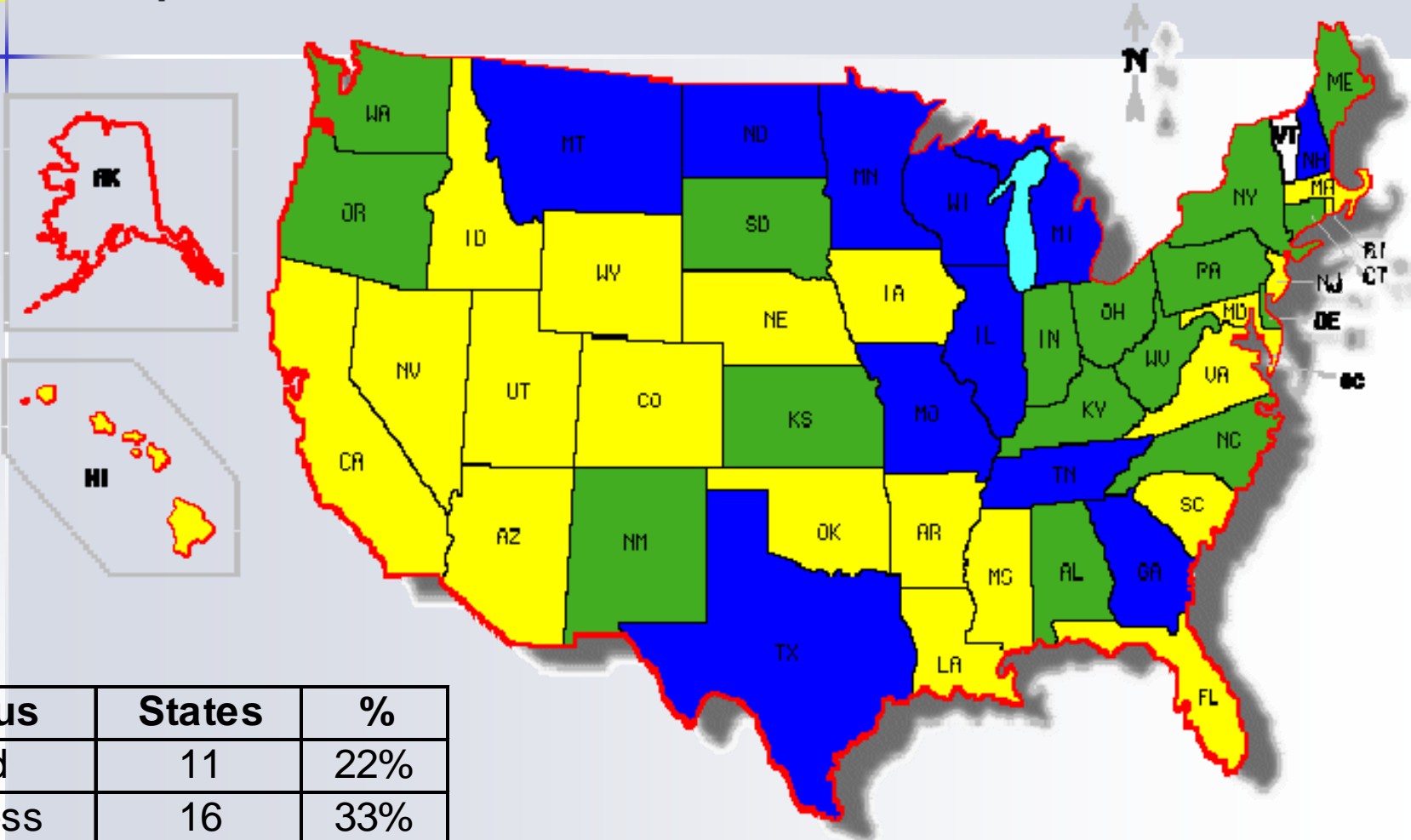
- Strategic Highway Safety Plans (SHSP)
- Transportation Safety Planning (TSP)
- Highway Safety Improvement Program
 - 10% Flex Funds

Strategic Highway Safety Plans (SHSP)

- SHSP Update - Based on input from 49 Division Offices.
- The Essential Eight – A Strategic Highway Safety Plan Implementation Process Model (SHSP IPM)
- SHSP Evaluation Process Model (EPM)

SHSP Updates

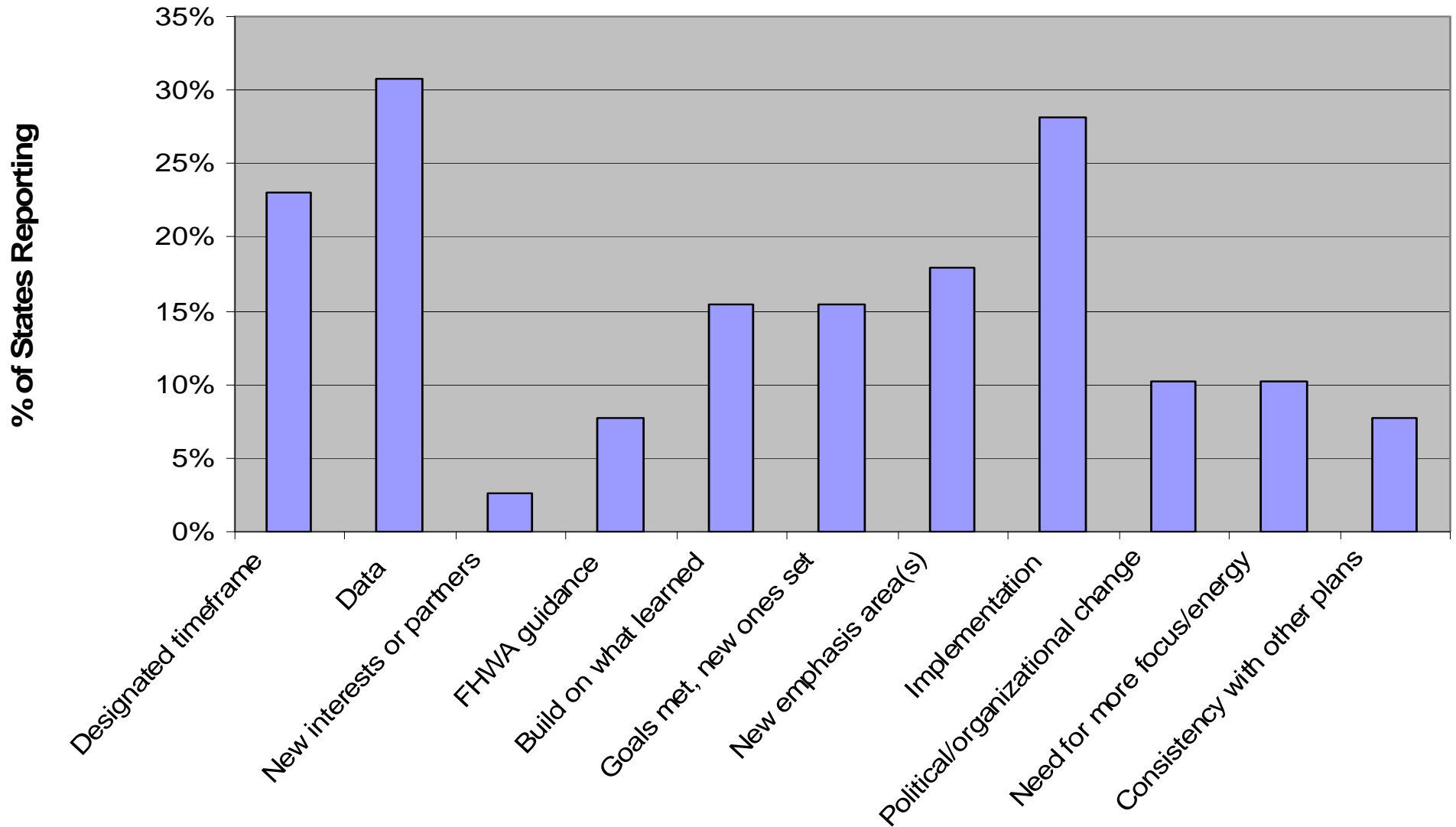
- - Updated
- - In Process
- - Not Updated



Status	States	%
Updated	11	22%
In process	16	33%
Not updated	22	45%
Total:	49	100%

SHSP Updates

Factors Influencing Update Decision



SHSP Update

■ Challenges

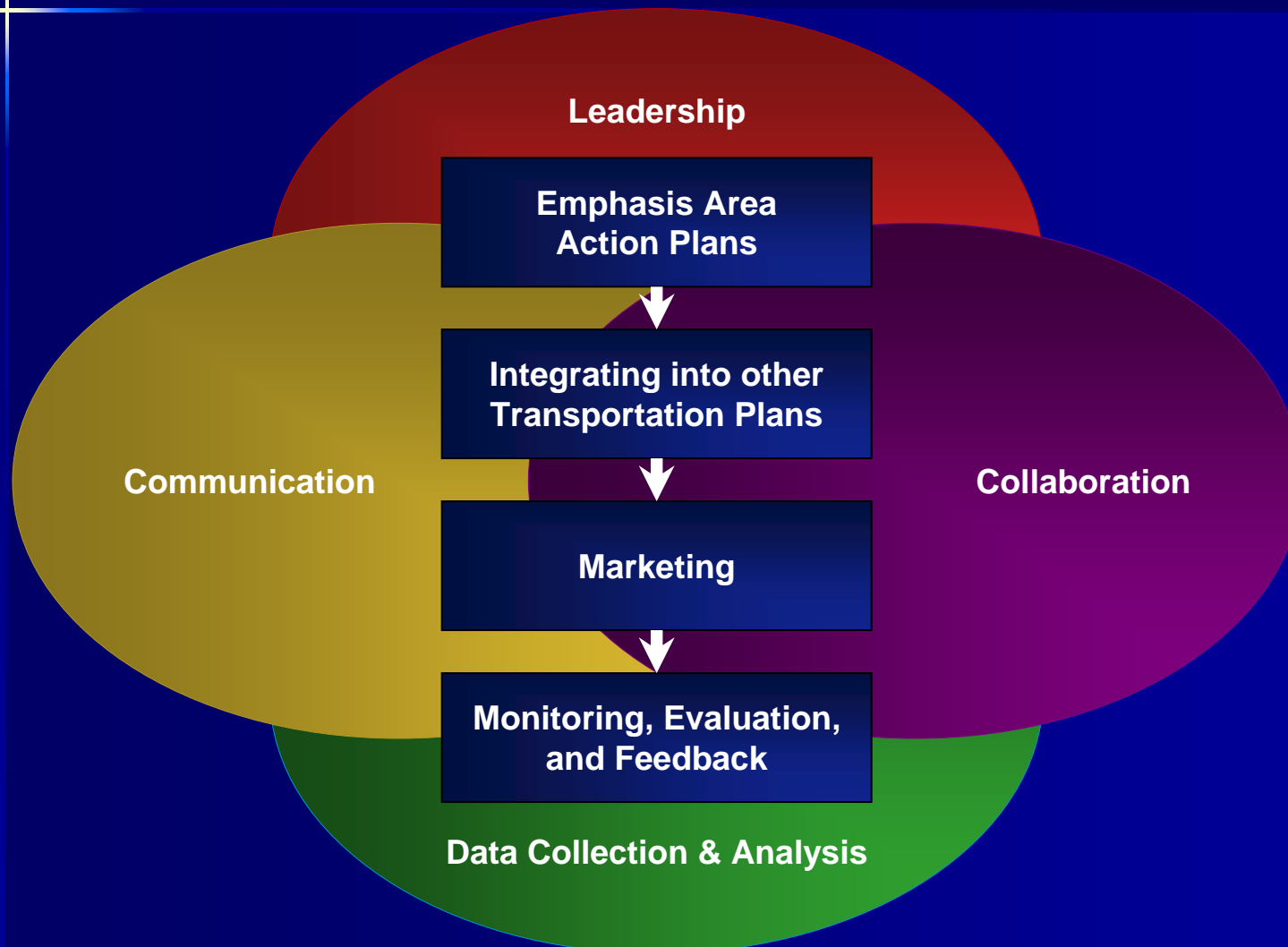
- Change
- States waiting to see reauthorization
- ARRA and other priorities
- Staff changes – State and Federal

■ Opportunities

- Increased effectiveness
- More comprehensive and inclusive
- Engage more stakeholders

The Essential Eight

A Strategic Highway Safety Plan Implementation Process Model (SHSP IPM)



The Essential Eight

A Strategic Highway Safety Plan Implementation Process Model (SHSP IPM)

- Chapters



- Key Strategies

- Narrative

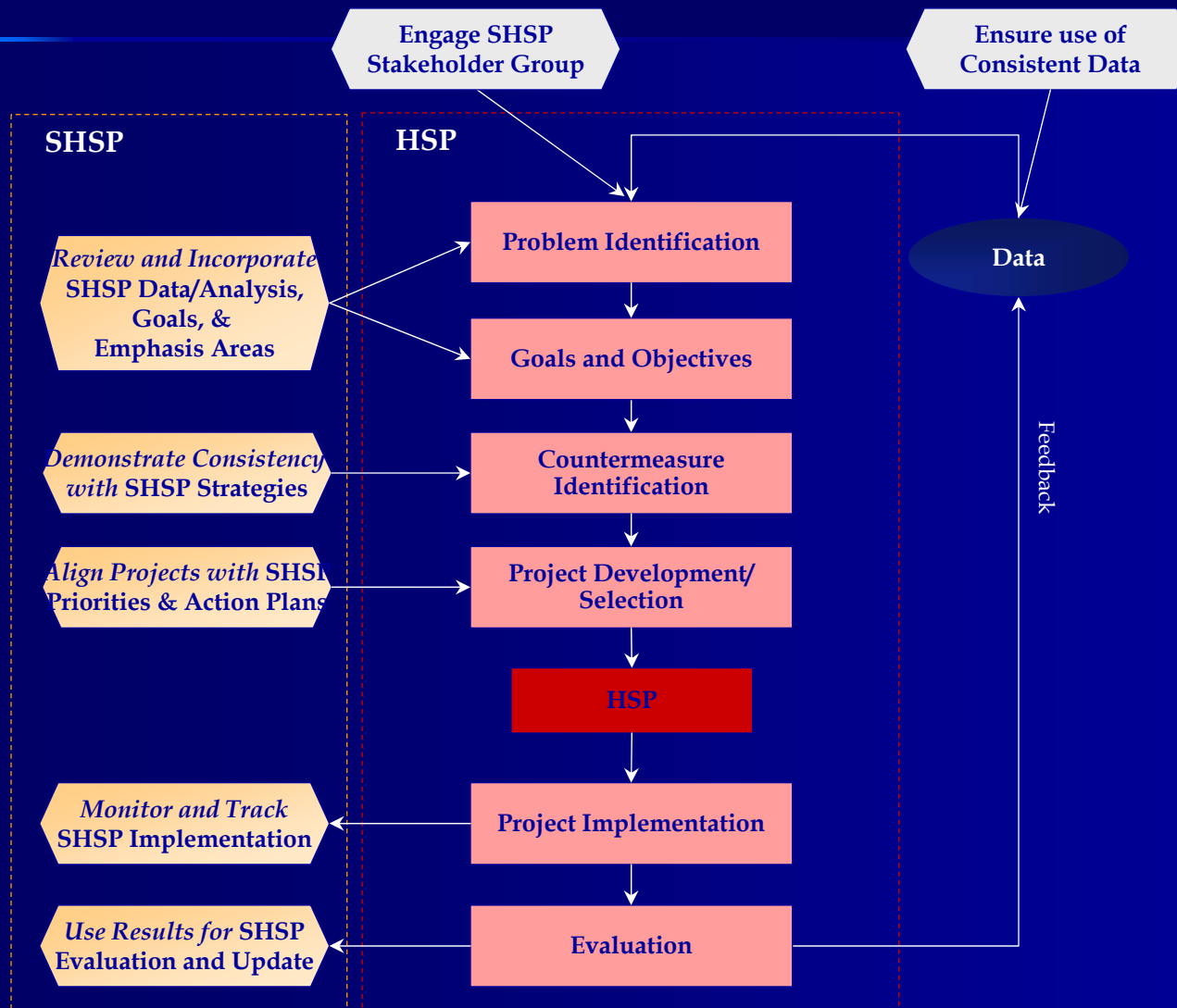
- Checklists

#

- Case Studies

The Essential Eight

A Strategic Highway Safety Plan Implementation Process Model (SHSP IPM)



Collaborative Problem Solving Partnership DOT and SHSO

- The SHSO includes the DOT Safety Engineer in its annual grant project selection process.
- The DOT includes SHSO in its project selection process.
- When applications for Safe Routes to School funds do not cover the total available funding, the DOT allows the SHSO to use the remaining funds to implement behavioral programs

Collaborative Problem Solving Partnership DOT and SHSO

- The DOT also provides a portion of STP Enhancement Funds to the SHSO for education and outreach programs involving pedestrian safety.
- MCSAP partners are intimately involved in SHSP implementation. As a result, the MCSAP partners are involved in the DOT freight planning process helping to ensure that freight safety is a factor considered in the transportation planning process.

The Essential Eight

A Strategic Highway Safety Plan Implementation Process Model (SHSP IPM)

- Kickoff: May 2008
- State Selection, Document Review, etc: June – August 2008
- Model State Interviews: September - October 2008
- IPM Drafting: November 2008 – April 2009
- Pilot Kickoff Meeting: April 14 – 15, 2009
- Review Panel Teleconference: April 16, 2009
- Draft IPM Released: April 23, 2009
- Pilot Test: April 15 – October 31, 2009
- Expect Final SHSP IPM: Spring 2010

Transportation Safety Planning (TSP)

- Transportation Safety Planning Working Group
- Transportation Planner's Safety Desk Reference Update
- National Highway Institute TSP Training Course
- State Safety Fact Sheet

Highway Safety Improvement Program (HSIP) – 10% Flex Funds

- Amount of Flex Funds Approved for Spending - 20 million
- Number of States using flex funds - 10
 - Alabama
 - Colorado
 - Hawaii
 - Idaho
 - Michigan
 - Minnesota
 - Nebraska
 - Nevada
 - Utah
 - Wisconsin

Highway Safety Improvement Program (HSIP) – 10% Flex Fund Current Activities

- Traffic records
- Occupant protection programs
- Impaired driving programs
- Young drivers programs
- Drowsy driving programs
- Attorney General's Office to support the Traffic Safety Resource Prosecutor

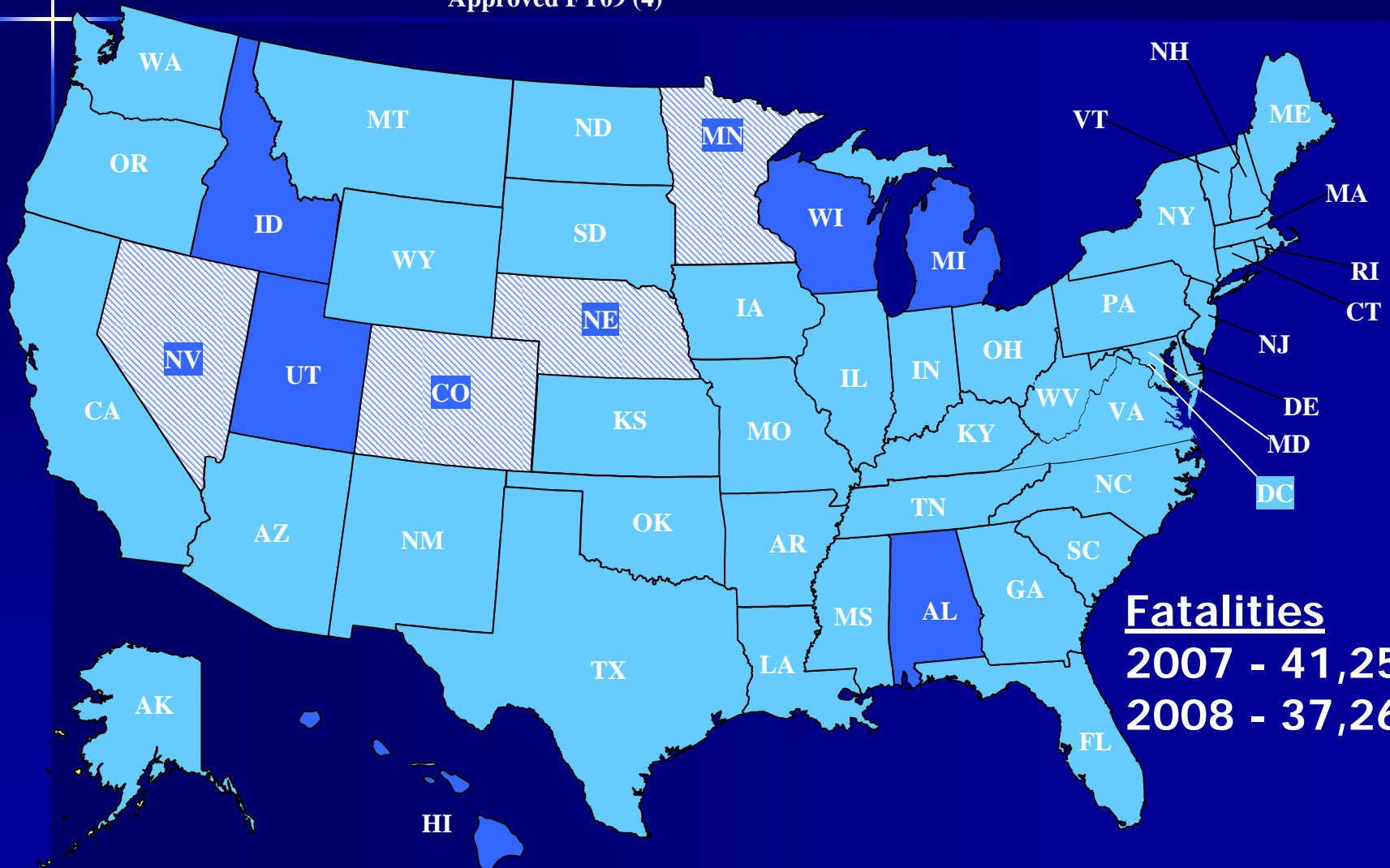
Highway Safety Improvement Program (HSIP) – 10% Flex Fund

Current Activities

- Crash and analysis map development
- Speed zone and management guidelines development
- Local traffic engineering safety analysis pilot program
- Older and medically impaired driver safety education materials

Highway Safety Improvement Program (HSIP) – 10% Flex Funding

Approved 10% Flex (10)
Approved FY09 (4) No 10% Flex (41)



Fatalities
2007 - 41,259
2008 - 37,261

Current and Future Collaborative Activity

- Primer – Safety Performance Measure & the Transportation Planning Process
- Safety Desk Reference – Update
- HSIP/SHSP – Peer 2 Peer Program
- SHSP Evaluation Process Model (EPM)
- HSIP/SHSP 101 – Web- based course

Current and Future Collaborative Activity

- U.S. DOT Traffic Records Coordinating Committee
- Standardized Data Elements
 - Model Minimum Uniform Crash Criteria (MMUCC)
 - Model Minimum Inventory of Roadway Elements (MMIRE)
- NHTSA's Performance Measures for State Traffic Records Systems Project

Questions ???

Tamiko Burnell
FHWA, Office of Safety
(202) 366-1200
Tamiko.burnell@dot.gov