



BJA
Bureau of Justice Assistance
U.S. Department of Justice

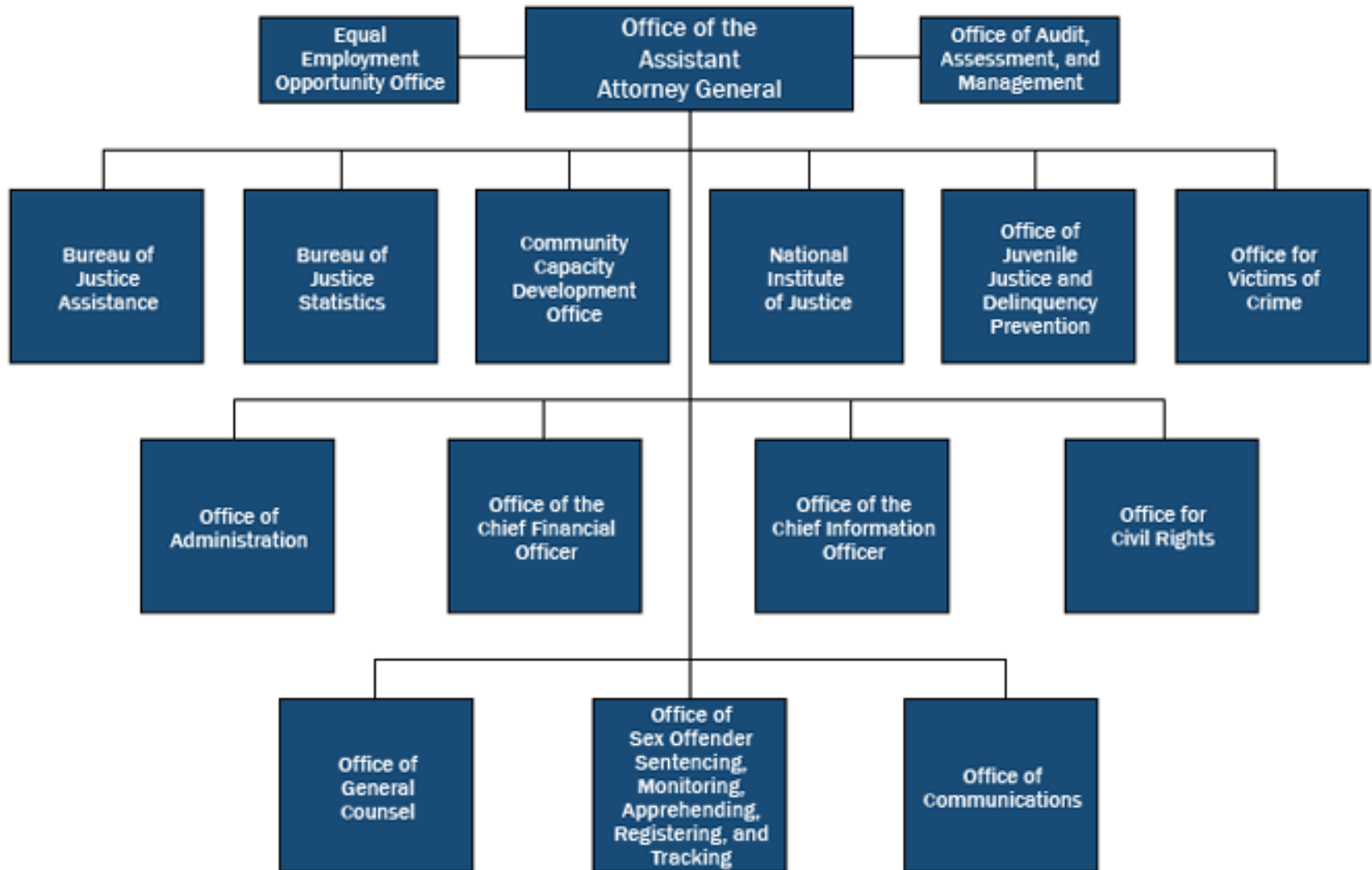
Using Data to Develop and Enhance Evidence-Based Strategies

Louis Tuthill, Ph.D.
Social Science Analyst
National Institute of Justice

Ed Banks, Ph.D.
Knowledge Management Coordinator
Bureau of Justice Assistance



BJA
Bureau of Justice Assistance
U.S. Department of Justice





BJA
Bureau of Justice Assistance
U.S. Department of Justice

Mission of the Office of Justice Programs

Increase public safety and improve the fair administration of justice across America through innovative leadership and programs.



BJA
Bureau of Justice Assistance
U.S. Department of Justice

Evidence-Based Practice

- President Obama has used evidence-based practice, research, and statistics from health-care to law enforcement
- This has been echoed by the Department of Justice and the Office of Justice programs
 - *If we can not prove that a program works it will not be funded in the 2011 budget.*
 - True for policy, programs, and legal practice
- We are working to change the culture of law enforcement to using data and thinking strategically
- We are trying to get departments to think differently
- Policy is one of Strategic Problem Solving



BJA
Bureau of Justice Assistance
U.S. Department of Justice

Strategic Problem Solving

- Identify the problem in the community (underage drinking, drunk driving locations and times).
- Identify the partners and resources that can assist you in addressing the problem.
- Gather data that can assist you in targeting your problem.



BJA
Bureau of Justice Assistance
U.S. Department of Justice

Strategic Problem Solving

- Prepare, assess, and implement a strategy.
- Monitor and evaluate the implementation and outcome of your strategy.
- Boston Ceasefire, Project Safe Neighborhoods, Drug Market Intervention, and Ceasefire Chicago.



Identify the Problem

- Identifying a problem comes from several places.
 - Local initiative, political pressure, or highly visible problem (top down).
 - Problem which you see as an issue (middle).
 - Issue which has been brought to you by a community (bottom up).



Identify Partners and Resources

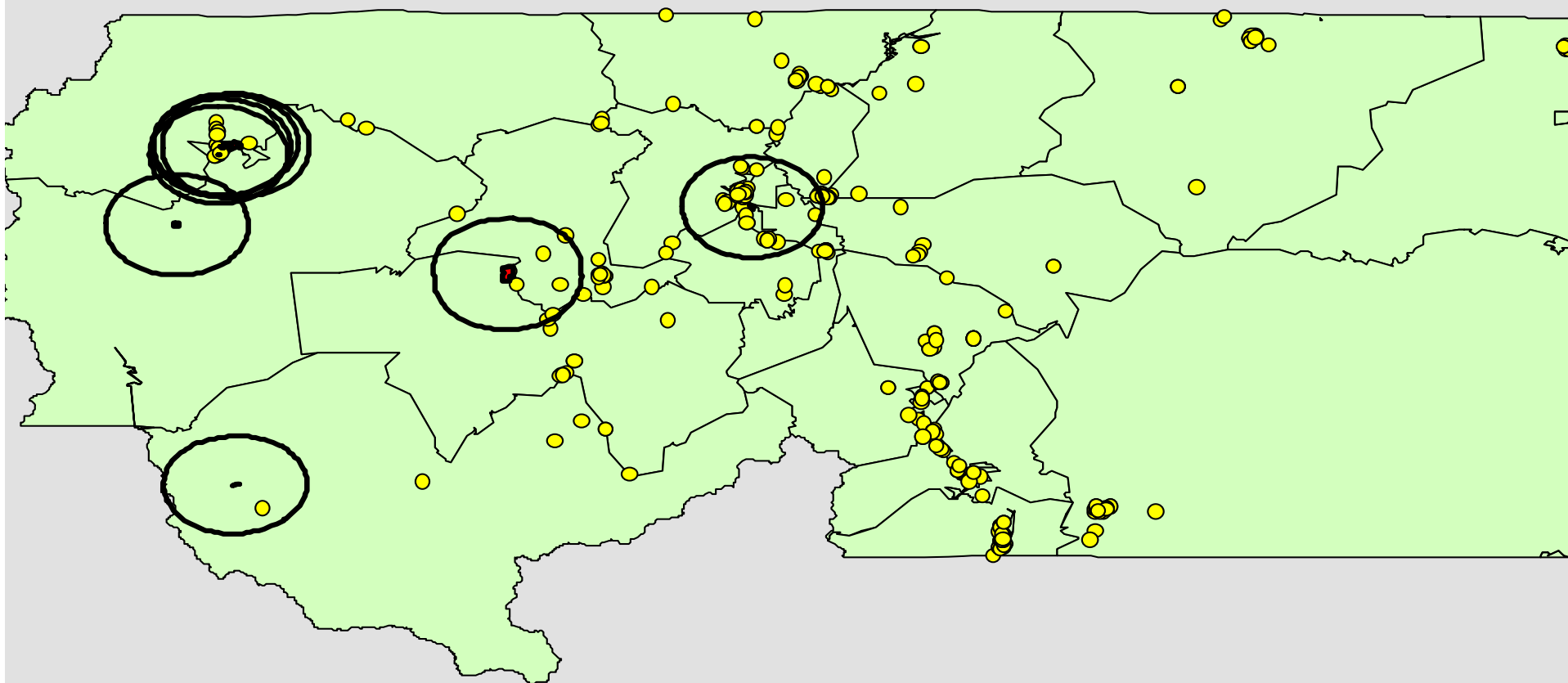
- Identify other organizations who deal with this issue (public health, social services, churches, child protective services, federal/local partners).
 - Programs?
 - Capacity?
 - Data?
 - Impact?
- Use their information to better triangulate the problem.
- Build a strategy that uses the best parts of your partners' ongoing efforts.



Gather Data

- Use geographical data to target the problem.
- On your intake and process forms, add fields that might assist the origination of the problem.
- Survey, interview, and talk to people in the area to find out the “why” of the problem.
- Continue to gather data to assess the impacts of your efforts.

Native American DV



Legend

- Tribal Lands
- Siskiyou County
- Domestic Violence
- 10 mile Radian



Prepare, Assess, and Implement a Strategy

- Trying not to re-invent the wheel.
 - Find out what has been tried both nationally and locally. (NCJRS, ICPSR)
 - Find out what has been effective.
- Try to build on current strengths of already existing strategies.
- Try to get buy-in from organizational partners and community members.
 - Ownership.



BJA
Bureau of Justice Assistance
U.S. Department of Justice

Prepare, Assess, and Implement a Strategy

- Clearly lay-out your strategy, the elements, and the level of effort given to each strategy.
- Monitor the level of commitment from your partners.
- See the results of your efforts and adjust accordingly.



BJA
Bureau of Justice Assistance
U.S. Department of Justice

Preparing a Strategy

- What is the goal?
- What has been proven effective generally and locally in reducing the goal?
- What resources can you put toward the goal?



Preparing a Strategy

- What are the elements that you will use to deliver those resources? Who, what, where, when, and how much?
- Who will be held accountable?
- Create some measures for all of these processes.



BJA
Bureau of Justice Assistance
U.S. Department of Justice

Examples of Effective Strategies

- Administrative License Revocation or Suspension.
- Sobriety Checkpoints.
- Automated Enforcement.
- Graduated Driver Licensing.



BJA
Bureau of Justice Assistance
U.S. Department of Justice

Monitor and Evaluate the Outcome of Your Strategy

- Use data and statistical analysis to see if programs are effective.
- Use geographic mapping to see if the strategy moved the problem to another place.



BJA
Bureau of Justice Assistance
U.S. Department of Justice

Monitor and Evaluate the Outcome of Your Strategy

- Use process measures to see which parts of your program were most effective, and what can be removed.
- See if increasing the dosage assists/resolves the problem.
- Move forward building on the strengths of earlier iterations.



BJA
Bureau of Justice Assistance
U.S. Department of Justice

Contact Information

Louis Tuthill

Louis.Tuthill@usdoj.gov

Ed Banks

Edward.Banks@usdoj.gov