

TRAFFIC RECORDS TRAINING

FOR STATE HIGHWAY SAFETY OFFICE LEADERSHIP



GETTING HELP WITH TRAFFIC RECORDS



SESSION OUTLINE

Getting Help with Traffic Records

- Data Analysis Resources
- Selecting a TR Data Consultant
- Fatality Analysis Reporting System (FARS)
- NHTSA Resources

INTRODUCTIONS

- ❑ Name
- ❑ Title and Highway Safety Office Responsibilities
- ❑ Length of Time in Highway Safety Office and in Current Position

LEARNING OUTCOMES

1. Describe the data analysis resources available to the SHSO
2. Describe your options in selecting a Traffic Records Consultant
3. Identify the purpose of Fatality Analysis Reporting System (FARS), where your state's FARS Analyst is located, and ways in which you can work with your analyst
4. Identify NHTSA's Traffic Records resources and their purpose

DATA ANALYSIS RESOURCES



DATA ANALYSIS RESOURCES

- In-house Data Analysis
 - SHSO staff
 - Personnel within your state agency
- Outsourcing Data Analysis
 - State university
 - Consultant

NATIONAL CENTER FOR STATISTICS AND ANALYSIS (NCSA)

- ❑ Analytical and Statistical Support
 - Human, vehicle, environmental, roadway characteristics
 - Injury mechanisms and crash dynamics
 - Effectiveness of traffic safety efforts
 - Monitoring of traffic safety problem
 - Benefits of proposed agency rules
- ❑ Oversee NHTSA Data Collection and Analysis Programs
- ❑ Variety of Publications
 - Reports
 - Crash Stats
 - Traffic Safety Fact Sheets

<http://www.nhtsa.gov/NCSA>

STATE TRAFFIC SAFETY INFORMATION (STSI)

□ State Specific Safety Information

- Safety performance measures
- Fatality rates
- Alcohol-impaired
- Speed related
- Safety belt/child safety seat use
- Motorcycle helmet use

The screenshot shows the NHTSA website interface for State Traffic Safety Information. At the top, the NHTSA logo is displayed with the text 'NATIONAL HIGHWAY TRAFFIC SAFETY ADMINISTRATION'. Below the logo is a navigation menu with tabs for 'Pubs/Data Requests', 'FARS Data Tables', 'Query FARS Data', 'State Traffic Safety Info', and 'Help'. The main content area features the title 'State Traffic Safety Information For Year 2011' and the subtitle 'Quick, easy access to traffic safety facts'. On the left, there is a map of the United States with state names labeled. On the right, there is a section titled 'State GIS Fatal Traffic Crash Maps' with the text 'This Utility Provides Location Based Maps of Fatal Crashes for the Years 2009-2011' and 'Click on States (on the US Map) to View these GIS Crash Maps'. Below this text is a satellite map of Birmingham, Alabama, showing several red location markers indicating fatal traffic crashes.

<http://http://www-nrd.nhtsa.dot.gov/departments/nrd-30/ncsa/STSI/USA%20WEB%20REPORT.HTM>

SELECTING A TRAFFIC RECORDS EXPERT



IDENTIFYING A TRAFFIC RECORDS EXPERT

- In-House Traffic Records Expert
 - SHSO staff
 - Personnel within your state agency
- Outsourcing Traffic Records Expert
 - Consultant

FATALITY ANALYSIS REPORTING SYSTEM



WHAT IS THE FATALITY ANALYSIS REPORTING SYSTEM (FARS)?

- ❑ Census of Fatal Traffic Crashes
 - Crash
 - Vehicles
 - People involved
- ❑ Data Gathered from State and Other Data Sources
 - Police accident reports
 - Driver/vehicle data systems
 - Hospital/EMS reports
 - Vital records
 - Coroner/medical examiner reports
- ❑ Transmitted to NHTSA Daily

SHSO OR OTHER STATE AGENCY?

□ State FARS Analysts can be Located in your:

- SHSO
- Department of Transportation
- Division of Motor Vehicles
- State Highway Patrol
- Department of Public Safety
- Injury Monitoring Agency

WORKING WITH YOUR STATE'S FARS ANALYST

- ❑ Fatality Crash Reports
 - Copies of crash reports
 - Some FARS Analysts enter fatal crashes into Crash Database
- ❑ Analysis and Research on Policy Issues
- ❑ Respond to Queries from General Public, Legislators, Media, etc.
- ❑ Information for SHSO Web Site and Publications
 - State Traffic Crash Facts
 - Impaired Driving Facts
 - County-Specific Fact Sheets
- ❑ Input on Safety Training Materials and Curriculum

NHTSA RESOURCES



TRAFFIC RECORDS PROGRAM ASSESSMENT ADVISORY

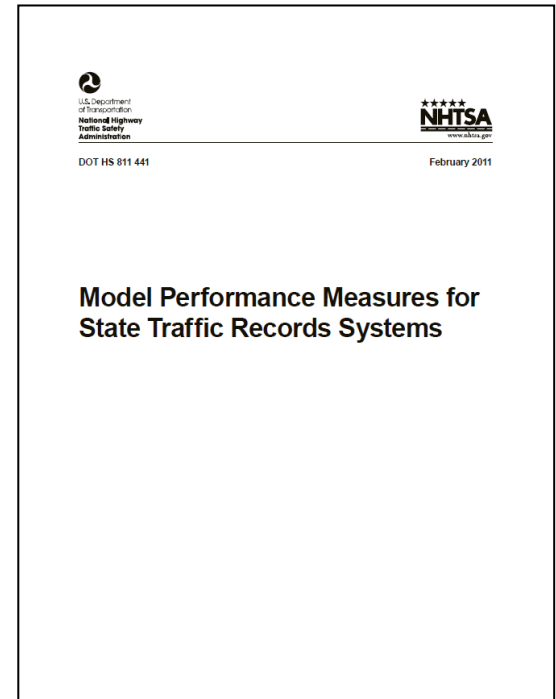
- ❑ Guidance on Traffic Records Data Collection, Management, and Analysis
- ❑ Describes IDEAL Traffic Records System
 - Contents
 - Capabilities
 - Data Quality
- ❑ Approach for Traffic Records Assessment



www-nrd.nhtsa.dot.gov/Pubs/811644.pdf

MODEL PERFORMANCE MEASURES FOR STATE TRAFFIC RECORDS SYSTEMS

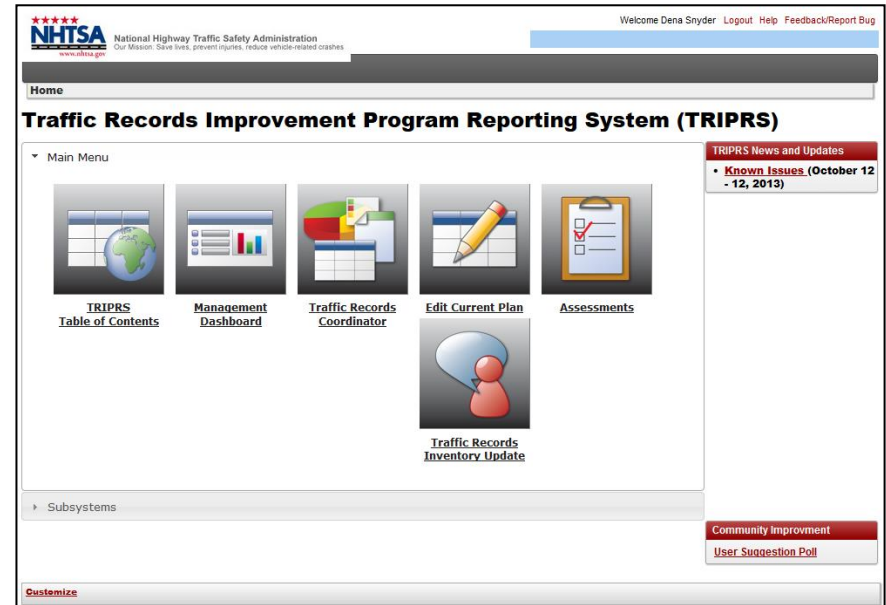
- ❑ Quantify Systemic Improvements to Traffic Records Systems
- ❑ Develop and Track Performance Goals
 - TR Strategic Plan
 - Highway Safety Plan
- ❑ Establish Measures for Specific Traffic Records Projects
- ❑ Support Data Improvement Goals in the SHSP



<http://www-nrd.nhtsa.dot.gov/Pubs/811441.pdf>

TRAFFIC RECORDS IMPROVEMENT PROGRAM REPORTING SYSTEM (TRIPRS)

- On-line Reporting System for State Traffic Records Information
 - State TRCC Information
 - Strategic Plan
 - TR Assessment Status
 - Performance Measures
 - TR Projects and Progress Reports
 - TR Data Systems



<http://www.nhtsa.gov/triprs>

NHTSA GO TEAMS

- ❑ Provide Technical Assistance or Training to Improve Traffic Records Data Collection, Management, and Analysis Capabilities
 - Small group of one to three subject matter experts
 - Address a smaller scale, short- to medium-term need
 - Requests should address a specific traffic records improvement need
- ❑ Identified by the TRCC and SHSO

<http://www.nhtsa.gov/Data/Traffic+Records>

EXAMPLE GO TEAMS TOPICS

Data Integration:

Evaluate available databases and facilitate discussion between data custodians to allow sharing and integration between agencies and suggest how integrated data could be used to identify problems and recommend and evaluate countermeasures

Injury Surveillance:

Facilitate discussions with data managers and help explain the importance of linking injury data with crash data, how data will be used, and address confidentiality concerns in order to move towards a data sharing agreement or MOU

Citation/Adjudication:

Help develop a “law table” to interpret the local charges and help States harmonize local and state statute citations so that more accurate data can be collected

Source: NHTSA, “Requesting a NHTSA Go Team”, October 2012

<http://www.nhtsa.gov/Data/Traffic+Records>

NHTSA GO TEAMS (CONT.)

□ Application Requirements

- Describe the issue in sufficient detail
- Submitted by state-designated representative via TRIPRS
- Approved by SHSO and TRCC
- Accepted on rolling basis
- First-come, first-served



Source: "A New Method for Assessing State Traffic Records", presentation by Dr. John Siegler, 2011 Traffic Records Forum, Charlotte, NC, August 1, 2011.

<http://www.nhtsa.gov/Data/Traffic+Records>

U.S. DOT TRCC

- ❑ Comprised of NHTSA, FHWA, FMCSA, and RITA
- ❑ Coordinated Support for State Records Systems and Analysis through Member Agency Outreach, Training, Technical Assistance, and Grant Programs
- ❑ Better Utilize Departmental Resources, Identify Data Collection and Analysis Collaboration Opportunities, and Support The Integration of Traffic Records Data and Standards

<http://www.dot.gov/trcc>

CDC – WEB-BASED INJURY STATISTICS QUERY AND REPORTING SYSTEM (WISQARS)

Interactive, On-line Database

- Fatal injury data
- Non-fatal injury data
- Violent death data
- Cost of injury data

Data Parameters

- Intent of injury
- Mechanism/cause
- Body region
- Nature/type
- Geographic location
- Demographics

The screenshot shows the CDC Home page for the WISQARS system. The header includes the CDC logo and the text "Centers for Disease Control and Prevention" and "CDC 24/7: Saving Lives. Protecting People.™". Below the header is a search bar and a navigation menu with letters A-Z. The main content area is titled "Injury Prevention & Control: Data & Statistics (WISQARS™)". It features a sidebar with navigation options like "Injury Center", "Data and Statistics (WISQARS)", "Overview", "Fatal Injury Data", "Nonfatal Injury Data", "Violent Deaths (NVDRS)", "Funded Programs, Activities & Research", "Communication Resource Center", "Press Room", "Social Media", and "Publications". The main content area includes a "Welcome to WISQARS™" message, a "NOTE TO USERS" section, and three data categories: "Fatal Injury Data", "Nonfatal Injury Data", and "Violent Deaths (NVDRS)". Each category has a brief description and a "Learn More and Query" link. The footer includes contact information for the CDC and the National Center for Injury Prevention and Control (NCIPC).

<http://www.cdc.gov/injury/wisqars/index.html>

SESSION SUMMARY

- Data Analysis Resources
- Selecting a TR Data Consultant
- The Fatality Analysis Reporting System (FARS)
- NHTSA Resources

SESSION SUMMARY

