



NHTSA

NATIONAL HIGHWAY TRAFFIC SAFETY ADMINISTRATION

The Power of FIRST + Census Data

Allison Beas
Regional Program Manager

The background of the slide is a blue-tinted photograph. The left half shows the interior of a car, with a hand on the steering wheel and the dashboard visible. The right half shows a view through the windshield of a multi-lane highway with other vehicles in the distance.

AGENDA

The Power of FIRST

**Zip Code Overlay and
Census Data**

**Why is this
Important?**

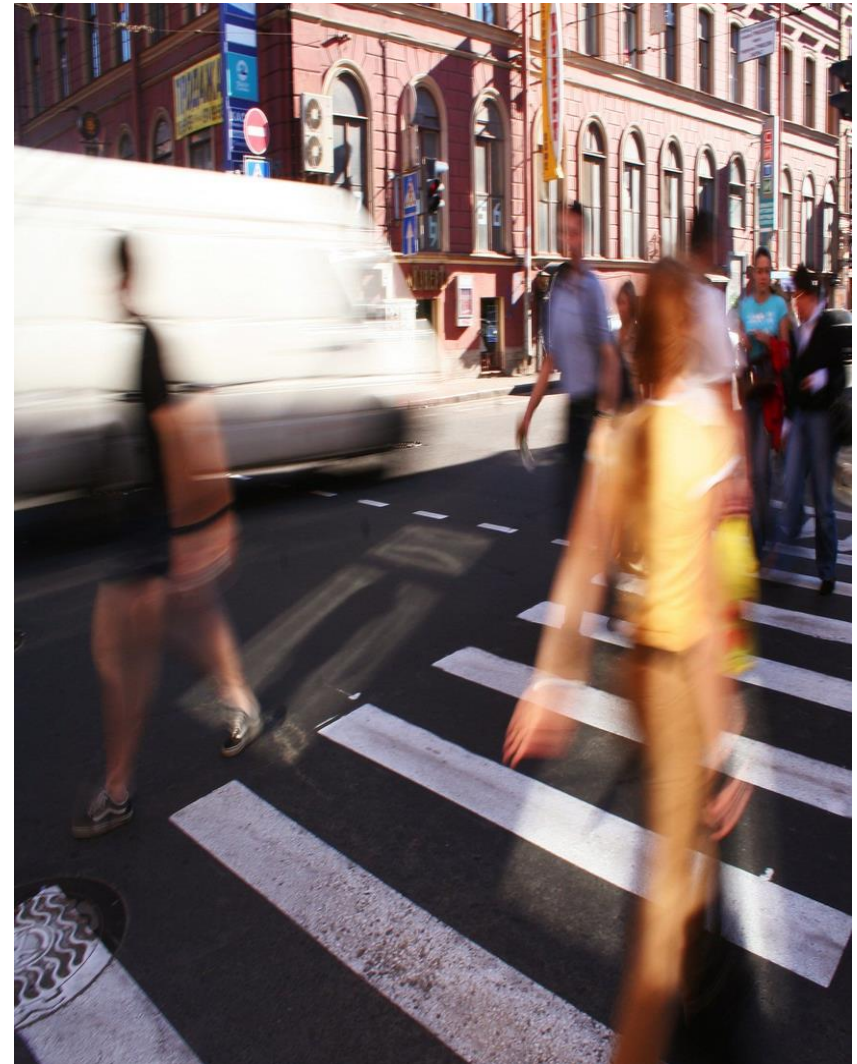
Call to Action

Scenario: Pedestrians – Arizona

(Counties: Yuma & La Paz, 2017 - 2019)

We will focus on these data elements:

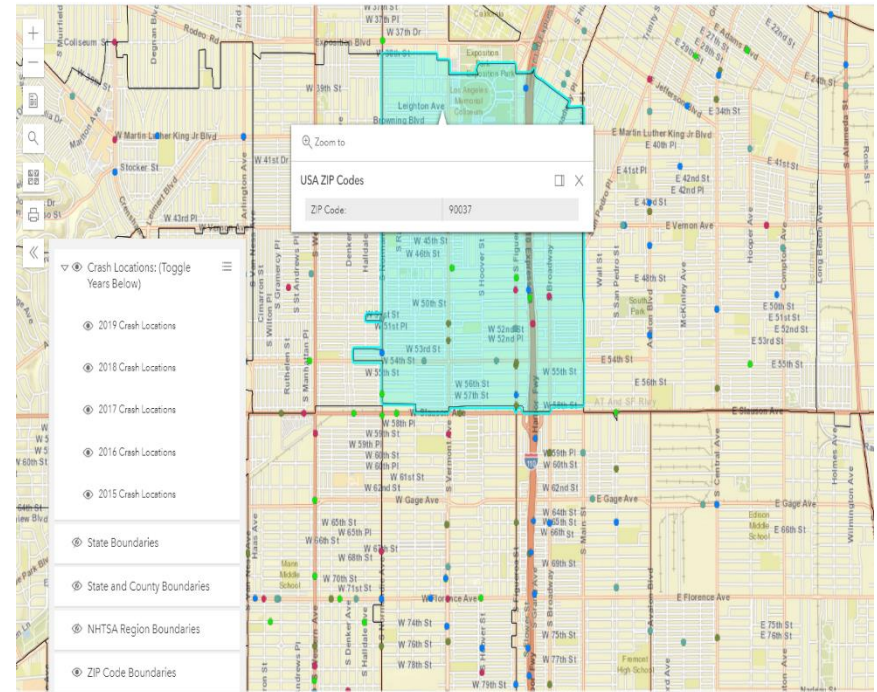
- ☐ Years
- ☐ Months
- ☐ Crash Locations
- ☐ Time
- ☐ Gender
- ☐ Race & Ethnicity
- ☐ Age
- ☐ Non-motorist location
- ☐ Blood Alcohol Concentration (BAC)
- ☐ Speed



☐ Zip Code Layer Map

(<https://data.census.gov/cedsci/>)

- ACS Demographic & Housing Estimates
- Commuting Characteristics by Sex
- Language Spoken at Home
- Income in the Past 12 months (In 2019 Inflation-Adjusted Dollars)
- Poverty Status in the Past 12 months
- Disability Characteristics



Yuma and La Paz Pedestrian Fatalities Characteristics

- ❑ Years - **2017, 2018, 2019**
- ❑ Months – **25% in November & 18.75% in October**
- ❑ Crash Locations – **Mapping and Zip Codes (85364, 85365, 85350, 85367, 85346 & 85348)**
- ❑ Time – **6 p.m. – 2 a.m.**
- ❑ Gender – **56.25% Males & 43.75% Females**
- ❑ Race & Ethnicity – **56.25% White, Non-Hispanic & 43.75% Hispanic**
- ❑ Age – **50% 55+**
- ❑ Non-motorist location – **87.5% Non-intersection**
- ❑ Blood Alcohol Concentration (BAC) – **12.5% BAC of 0.08+**
- ❑ Speed – **12.5% involved speeding**

Characteristics of the Community - 85364

- Gender - **Male 50% & Female 50%**
- Age – **55+ (24.7% of the population)**
- Race & Ethnicity – **69.1% Hispanic or Latino (of any race), 25% White alone (non-Hispanic), 2.1% Black or African American, 1.4% Asian & 1.1% American Indian**
- Means of Transportation – **92.5% use vehicles, 1.2% Public transportation & 1.1% Walking**
- Commuting Characteristics – **67.2% commuted 29 minutes or less**
- Language – **53.2% Speak Spanish & 45% Speak only English (6.2% of 65+ Speak Spanish)**
- Poverty & Income – **22.6% live below the poverty level & 42% earn \$35K or less (households)**
- Disability – **27.41% of 65+ had an ambulatory difficulty**



Additional Resources

Racial Equity Data Tools - Community Resilience Estimates

<https://covid19.census.gov/pages/data-equity>

Racial and Ethnic Diversity in the United States: 2010 Census and 2020 Census

<https://www.census.gov/library/visualizations/interactive/racial-and-ethnic-diversity-in-the-united-states-2010-and-2020-census.html>

Race and Ethnicity in the United States: 2010 Census and 2020 Census

<https://www.census.gov/library/visualizations/interactive/race-and-ethnicity-in-the-united-state-2010-and-2020-census.html>

Why is this Important?

- Appropriate Countermeasures
- Appropriate Messaging
- Partnership Opportunities
- Effective Use of our Resources
- Reduce Fatalities



Call To Action

Use what you have learned today!

What trends do you see in your State?

What does the Census data tell you?

*Ex. Majority of the crashes are occurring in low income communities
Crashes are predominantly in Black or Hispanic Communities*



Contact information:

Allison Beas
Regional Program Manager
allison.beas@dot.gov
914-682-6237