



SAFETY
COALITION

USING TECHNOLOGY TO IMPROVE DISTRACTED DRIVING ENFORCEMENT

SGT. ADAM MOORE – SOUTH LAKE MINNETONKA PD

OVERVIEW

- Issues with traditional enforcement.
- How SLMPD utilized Acusensus Technology.
- Enforcement Numbers.
- Preliminary crash data.
- Community reception.



TRADITIONAL ENFORCEMENT METHODS

- Attempting to detect distracted drivers while on patrol.
- Tedious process.
- Potentially dangerous.
- Lack of evidence.



CREATIVE ENFORCEMENT METHODS

- Requires multiple assets.
- Potentially exposed to the elements.
- May be difficult to plan and execute.
- Evidence may be hard to obtain.

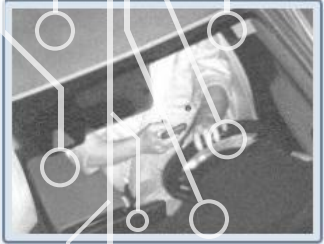


ACUSENSUS TECHNOLOGY

- Utilizes AI technology to detect distracted drivers or unbelted occupants.
- Officers receive real-time alerts.
- Officers can make the enforcement determination before attempting stop.

Vehicle 65124 — Lane 1 — 8/2/2025, 4:44:00 AM

⚠ Distances not configured in settings

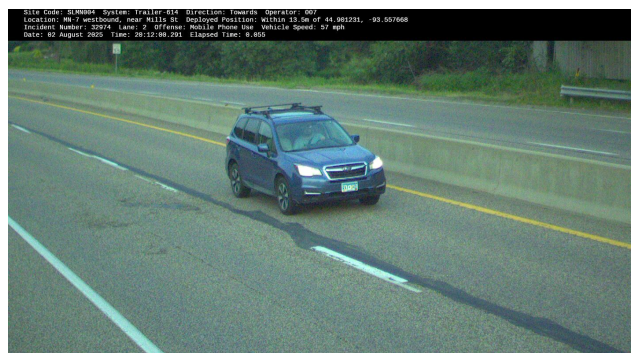


Driver Image



ACUSENSUS HEADS-UP REAL-TIME SOLUTION

- Multiple picture angles are sent to officer's device.
- Infrared images of involved occupants.
- Infrared image of front plate.
- Color picture of vehicle.



EVIDENCE PACKAGE

- PDF with high resolution photos.
- Sent via email.
- Contains offense info.
- Photos not enhanced or zoomed in.

HOW WE UTILIZED THE TECHNOLOGY

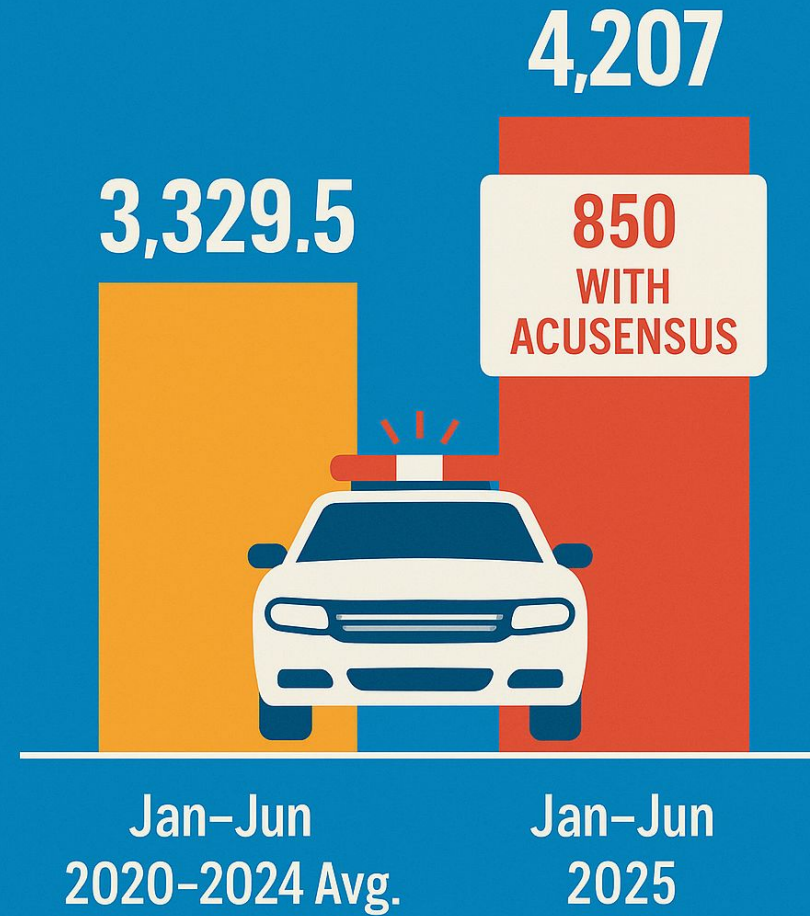
- We hosted several multiagency enforcement events.
 - One officer verifies the violation and calls out the description to other officers.
- We conduct enforcement with the technology during daily operations.
 - Officers can use while solo or with shift partners



SLMPD TRAFFIC NUMBERS

- SLMPD is typically proactive in traffic enforcement.
- During TZD enforcement reporting periods, SLMPD is usually top 20, despite its size.

TRAFFIC STOPS



SLMPD TRAFFIC NUMBERS

**April
2024**



59

**DISTRACTED
DRIVING
CITATIONS**

**April
2025**



305

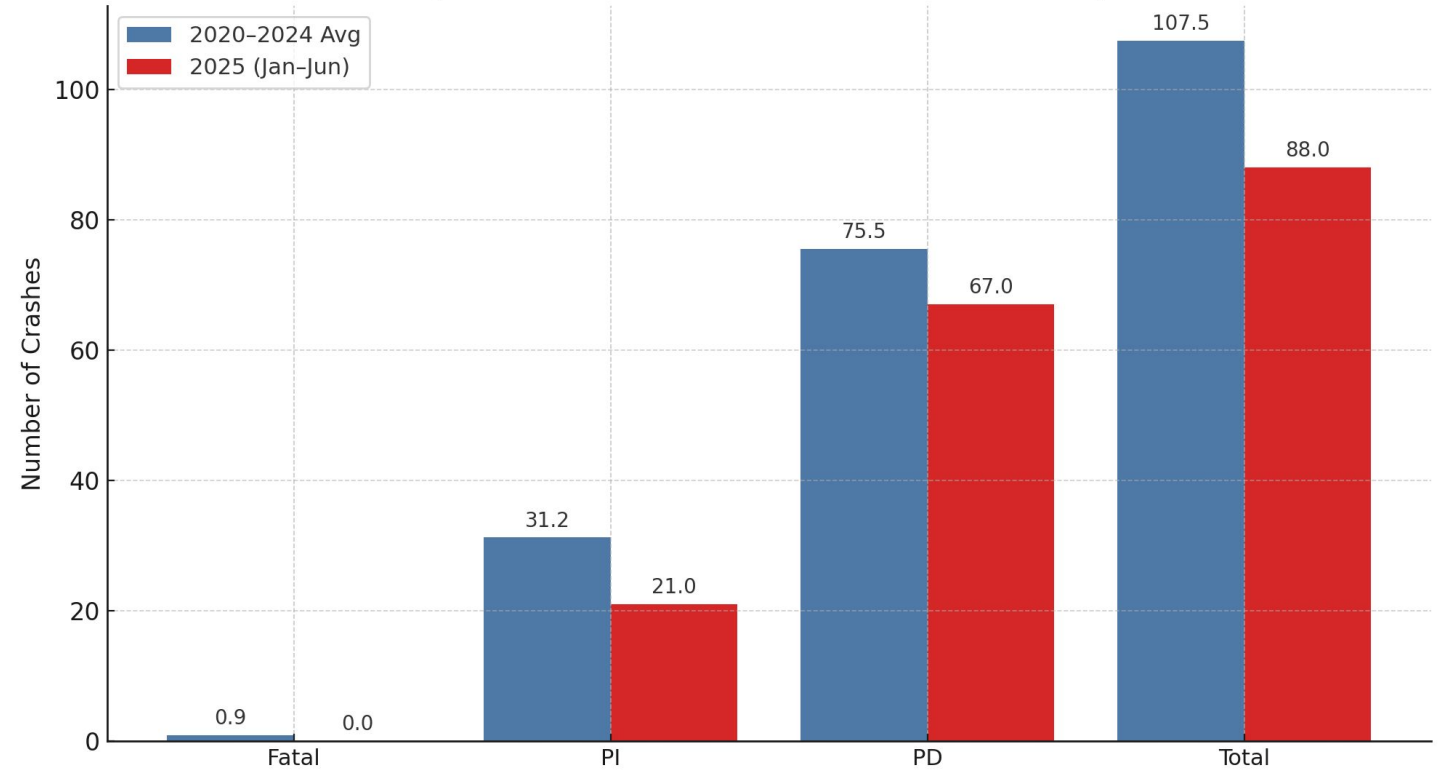
**USING
ACUSENSUS**

- SLMPD is typically proactive in traffic enforcement.
- During TZD enforcement reporting periods, SLMPD is usually top 20, despite its size.
- During April 2025 Distracted Driving Awareness Month, SLMPD Ranked Third in the State of Minnesota

PRELIMINARY CRASH DATA



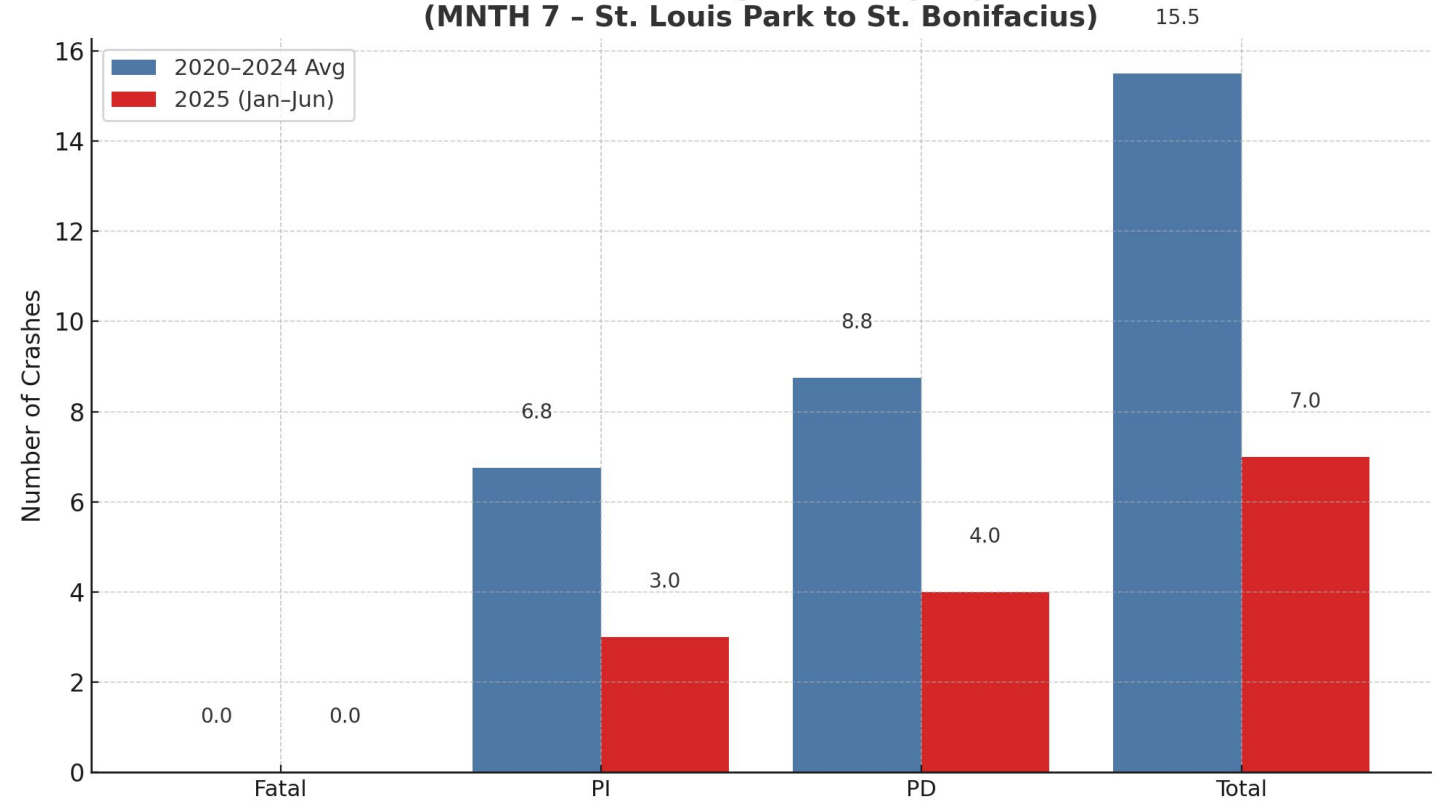
**All Crashes (Jan-June)
(MNTH 7 - St. Louis Park to St. Bonifacius)**



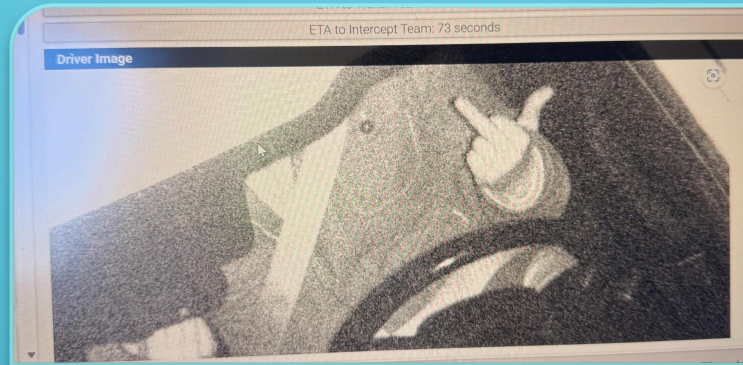
PRELIMINARY CRASH DATA



**Distracted Driving Crashes (Jan-June)
(MNTN 7 - St. Louis Park to St. Bonifacius)**



COMMUNITY RECEPTION



Subject: Compliment

I just wanna say thank you for putting that equipment on Highway seven because it's gotten so out of hand. I can't believe it and I can't believe anybody would be against it... Because I live in Saint Bonnie driving down seven on that side is a nightmare. I wish they would expand it all the way down Because it's very dangerous. They've got cars passing early in the morning almost having head on collision between Saint Bonnie and Mound exit 44 and then from there around Lake Zumbra it's really dangerous and people you can drive by people all the time that are just looking at their phone and they're speeding like crazy. I just can't believe it. I am sending you praise for having this and anybody who doesn't like it to hack with them! Thank you so much Cindy Smith
Sent from my iPhone

THANK YOU!

- Sergeant Adam Moore – South Lake Minnetonka Police
- Amoore@southlakepd.com

